

No Fees per Government Code 27383

RECORDING REQUESTED BY:
Ventura Local Agency Formation Commission
WHEN RECORDED MAIL TO:
Ventura LAFCo
L# 1850



20150722-00112043-0 1/18

Ventura County Clerk and Recorder
MARK A. LUNN
07/22/2015 02:25:30 PM
965764 \$.00 CO

VENTURA
LOCAL AGENCY FORMATION COMMISSION
800 South Victoria Ave.
Ventura CA 93009-1850

CERTIFICATE OF COMPLETION

Pursuant to Government Code Section 57200, this Certificate is issued by the Executive Officer of the Local Agency Formation Commission for Ventura County, California.

1. The short-term designation, as determined by LAFCo, is:

LAFCo 14-12 Oxnard Drainage District No. 1 Detachment – Detachment No. 4 (Parcels A and B)
2. The name of each district or city involved in this reorganization and the kind or type of change of organization ordered for each city or district is as follows:

Oxnard Drainage District No. 1 Detachment – Detachment No. 4 (Parcels A and B)
3. Assessor's Parcel Numbers: See Attachment 1
4. The above listed city and districts are located within the following county: Ventura
5. The Local Agency Formation Commission's resolution of approval, LAFCo 14-12, which was adopted on September 17, 2014, is made a part of this certificate by reference and sets forth the description of the boundaries of the proposal and any terms and conditions that apply.
6. The territory is inhabited.

I hereby certify that the resolution cited above includes any terms and conditions, and the maps and legal descriptions. I declare under penalty of perjury that the foregoing is true and correct.

Dated: 7-21-15


Kai Luoma, Executive Officer
Ventura LAFCo

Assessor Parcel Numbers within Parcel A

215-0-010-050	215-0-180-315	215-0-190-115	215-0-190-525
215-0-010-100	215-0-180-325	215-0-190-125	215-0-190-535
215-0-010-120	215-0-180-335	215-0-190-135	215-0-190-545
215-0-010-140	215-0-180-345	215-0-190-145	215-0-190-555
215-0-010-150	215-0-180-355	215-0-190-155	215-0-190-565
215-0-020-020	215-0-180-365	215-0-190-165	215-0-190-575
215-0-020-030	215-0-180-375	215-0-190-175	215-0-190-585
215-0-020-105	215-0-180-385	215-0-190-185	215-0-190-595
215-0-020-115	215-0-180-395	215-0-190-195	215-0-190-605
215-0-030-020	215-0-180-405	215-0-190-205	215-0-190-615
215-0-030-030	215-0-180-415	215-0-190-215	215-0-190-625
215-0-180-015	215-0-180-425	215-0-190-225	215-0-190-635
215-0-180-025	215-0-180-435	215-0-190-235	215-0-190-645
215-0-180-035	215-0-180-445	215-0-190-245	215-0-190-655
215-0-180-045	215-0-180-455	215-0-190-255	215-0-190-665
215-0-180-055	215-0-180-465	215-0-190-265	215-0-190-675
215-0-180-065	215-0-180-475	215-0-190-275	215-0-190-685
215-0-180-075	215-0-180-485	215-0-190-285	215-0-190-695
215-0-180-085	215-0-180-495	215-0-190-295	215-0-200-015
215-0-180-095	215-0-180-505	215-0-190-305	215-0-200-025
215-0-180-105	215-0-180-515	215-0-190-315	215-0-200-035
215-0-180-115	215-0-180-525	215-0-190-325	215-0-200-045
215-0-180-125	215-0-180-535	215-0-190-335	215-0-200-055
215-0-180-135	215-0-180-545	215-0-190-345	215-0-200-065
215-0-180-145	215-0-180-555	215-0-190-355	215-0-200-075
215-0-180-155	215-0-180-565	215-0-190-365	215-0-200-085
215-0-180-165	215-0-180-575	215-0-190-375	215-0-200-095
215-0-180-175	215-0-180-585	215-0-190-385	215-0-200-105
215-0-180-185	215-0-180-595	215-0-190-395	215-0-200-115
215-0-180-195	215-0-180-605	215-0-190-405	215-0-200-125
215-0-180-205	215-0-180-615	215-0-190-415	215-0-200-135
215-0-180-215	215-0-190-015	215-0-190-425	215-0-200-145
215-0-180-225	215-0-190-025	215-0-190-435	215-0-200-155
215-0-180-235	215-0-190-035	215-0-190-445	215-0-200-165
215-0-180-245	215-0-190-045	215-0-190-455	215-0-200-175
215-0-180-255	215-0-190-055	215-0-190-465	215-0-200-185
215-0-180-265	215-0-190-065	215-0-190-475	215-0-200-195
215-0-180-275	215-0-190-075	215-0-190-485	215-0-200-205
215-0-180-285	215-0-190-085	215-0-190-495	215-0-200-215
215-0-180-295	215-0-190-095	215-0-190-505	215-0-200-225
215-0-180-305	215-0-190-105	215-0-190-515	215-0-200-235

215-0-200-245	215-0-211-125	215-0-212-275	215-0-251-335
215-0-200-255	215-0-211-135	215-0-212-285	215-0-251-345
215-0-200-265	215-0-211-145	215-0-212-295	215-0-251-355
215-0-200-275	215-0-211-155	215-0-212-305	215-0-251-365
215-0-200-285	215-0-211-165	215-0-212-315	215-0-251-375
215-0-200-295	215-0-211-175	215-0-212-325	215-0-251-385
215-0-200-305	215-0-211-185	215-0-212-335	215-0-251-395
215-0-200-315	215-0-211-205	215-0-212-345	215-0-251-405
215-0-200-325	215-0-211-215	215-0-212-355	215-0-251-415
215-0-200-335	215-0-211-225	215-0-212-365	215-0-251-425
215-0-200-345	215-0-211-235	215-0-212-375	215-0-251-435
215-0-200-355	215-0-211-245	215-0-251-015	215-0-251-445
215-0-200-365	215-0-211-255	215-0-251-025	215-0-251-455
215-0-200-375	215-0-211-265	215-0-251-035	215-0-251-465
215-0-200-385	215-0-211-275	215-0-251-045	215-0-251-475
215-0-200-395	215-0-211-285	215-0-251-055	215-0-251-485
215-0-200-405	215-0-211-295	215-0-251-065	215-0-251-495
215-0-200-415	215-0-211-305	215-0-251-075	215-0-251-505
215-0-200-425	215-0-212-015	215-0-251-085	215-0-251-515
215-0-200-435	215-0-212-025	215-0-251-095	215-0-251-525
215-0-200-445	215-0-212-035	215-0-251-105	215-0-251-535
215-0-200-455	215-0-212-045	215-0-251-115	215-0-251-545
215-0-200-465	215-0-212-055	215-0-251-125	215-0-251-555
215-0-200-475	215-0-212-065	215-0-251-135	215-0-251-565
215-0-200-485	215-0-212-075	215-0-251-145	215-0-251-575
215-0-200-495	215-0-212-085	215-0-251-155	215-0-251-585
215-0-200-505	215-0-212-095	215-0-251-165	215-0-251-595
215-0-200-515	215-0-212-105	215-0-251-175	215-0-252-015
215-0-200-525	215-0-212-115	215-0-251-185	215-0-252-025
215-0-200-535	215-0-212-125	215-0-251-195	215-0-252-035
215-0-200-545	215-0-212-135	215-0-251-205	215-0-252-045
215-0-200-555	215-0-212-145	215-0-251-215	215-0-252-055
215-0-211-015	215-0-212-155	215-0-251-225	215-0-252-065
215-0-211-025	215-0-212-165	215-0-251-235	215-0-252-075
215-0-211-035	215-0-212-175	215-0-251-245	215-0-252-085
215-0-211-045	215-0-212-185	215-0-251-255	215-0-252-095
215-0-211-055	215-0-212-205	215-0-251-265	215-0-252-105
215-0-211-065	215-0-212-215	215-0-251-275	215-0-252-115
215-0-211-075	215-0-212-225	215-0-251-285	215-0-252-125
215-0-211-085	215-0-212-235	215-0-251-295	215-0-252-135
215-0-211-095	215-0-212-245	215-0-251-305	215-0-252-145
215-0-211-105	215-0-212-255	215-0-251-315	215-0-252-155
215-0-211-115	215-0-212-265	215-0-251-325	215-0-252-165

215-0-252-175	215-0-253-295	215-0-261-425	215-0-262-125
215-0-252-185	215-0-253-305	215-0-261-435	215-0-262-135
215-0-252-195	215-0-261-015	215-0-261-445	215-0-262-145
215-0-252-205	215-0-261-035	215-0-261-455	215-0-262-155
215-0-252-215	215-0-261-045	215-0-261-465	215-0-262-165
215-0-252-225	215-0-261-055	215-0-261-475	215-0-263-015
215-0-252-235	215-0-261-065	215-0-261-485	215-0-263-025
215-0-252-245	215-0-261-075	215-0-261-495	215-0-263-035
215-0-252-255	215-0-261-085	215-0-261-505	215-0-263-045
215-0-252-265	215-0-261-095	215-0-261-515	215-0-263-055
215-0-252-275	215-0-261-105	215-0-261-525	215-0-263-065
215-0-252-285	215-0-261-115	215-0-261-535	215-0-263-075
215-0-252-295	215-0-261-125	215-0-261-545	215-0-263-085
215-0-252-305	215-0-261-135	215-0-261-555	215-0-263-095
215-0-253-015	215-0-261-145	215-0-261-565	215-0-263-105
215-0-253-025	215-0-261-155	215-0-261-575	215-0-263-115
215-0-253-035	215-0-261-165	215-0-261-585	215-0-263-125
215-0-253-045	215-0-261-175	215-0-261-595	215-0-263-135
215-0-253-055	215-0-261-185	215-0-261-605	215-0-263-145
215-0-253-065	215-0-261-195	215-0-261-615	215-0-263-155
215-0-253-075	215-0-261-205	215-0-261-625	215-0-263-165
215-0-253-085	215-0-261-215	215-0-261-645	215-0-264-015
215-0-253-095	215-0-261-225	215-0-261-655	215-0-264-025
215-0-253-105	215-0-261-235	215-0-261-665	215-0-264-035
215-0-253-115	215-0-261-245	215-0-261-675	215-0-264-045
215-0-253-125	215-0-261-255	215-0-261-685	215-0-264-055
215-0-253-135	215-0-261-265	215-0-261-695	215-0-264-065
215-0-253-145	215-0-261-275	215-0-261-705	215-0-264-075
215-0-253-155	215-0-261-285	215-0-261-715	215-0-264-085
215-0-253-165	215-0-261-295	215-0-261-725	215-0-264-095
215-0-253-175	215-0-261-305	215-0-261-735	215-0-264-105
215-0-253-185	215-0-261-315	215-0-262-015	215-0-264-115
215-0-253-195	215-0-261-325	215-0-262-025	215-0-264-125
215-0-253-205	215-0-261-335	215-0-262-035	215-0-264-135
215-0-253-215	215-0-261-345	215-0-262-045	215-0-264-145
215-0-253-225	215-0-261-355	215-0-262-055	215-0-264-155
215-0-253-235	215-0-261-365	215-0-262-065	215-0-264-165
215-0-253-245	215-0-261-375	215-0-262-075	215-0-265-015
215-0-253-255	215-0-261-385	215-0-262-085	215-0-265-025
215-0-253-265	215-0-261-395	215-0-262-095	215-0-265-035
215-0-253-275	215-0-261-405	215-0-262-105	215-0-265-045
215-0-253-285	215-0-261-415	215-0-262-115	215-0-265-055

215-0-265-065	215-0-281-105	215-0-283-165	215-0-285-105
215-0-265-075	215-0-281-115	215-0-283-175	215-0-285-115
215-0-265-085	215-0-281-125	215-0-283-185	215-0-285-125
215-0-265-095	215-0-281-135	215-0-283-195	215-0-285-135
215-0-265-105	215-0-281-145	215-0-283-205	215-0-285-145
215-0-265-115	215-0-282-015	215-0-283-215	215-0-285-155
215-0-265-125	215-0-282-025	215-0-283-225	215-0-285-165
215-0-265-145	215-0-282-035	215-0-283-235	215-0-285-175
215-0-265-155	215-0-282-045	215-0-283-245	215-0-285-185
215-0-265-165	215-0-282-055	215-0-284-015	215-0-285-195
215-0-265-175	215-0-282-065	215-0-284-025	215-0-285-205
215-0-265-185	215-0-282-075	215-0-284-035	215-0-285-215
215-0-265-195	215-0-282-085	215-0-284-045	215-0-285-225
215-0-265-205	215-0-282-095	215-0-284-055	215-0-286-015
215-0-265-215	215-0-282-105	215-0-284-065	215-0-286-025
215-0-265-225	215-0-282-115	215-0-284-075	215-0-286-035
215-0-265-235	215-0-282-125	215-0-284-085	215-0-286-045
215-0-265-245	215-0-282-135	215-0-284-095	215-0-286-055
215-0-265-255	215-0-282-145	215-0-284-105	215-0-286-065
215-0-265-265	215-0-282-155	215-0-284-115	215-0-286-075
215-0-265-275	215-0-282-165	215-0-284-125	215-0-286-085
215-0-265-285	215-0-282-175	215-0-284-135	215-0-286-095
215-0-265-295	215-0-282-185	215-0-284-145	215-0-286-105
215-0-271-015	215-0-282-195	215-0-284-155	215-0-286-115
215-0-271-025	215-0-282-205	215-0-284-165	215-0-286-125
215-0-271-035	215-0-282-215	215-0-284-175	215-0-286-135
215-0-271-045	215-0-282-225	215-0-284-185	215-0-286-145
215-0-271-055	215-0-283-015	215-0-284-195	215-0-286-155
215-0-271-065	215-0-283-025	215-0-284-205	215-0-286-165
215-0-271-075	215-0-283-035	215-0-284-215	215-0-286-175
215-0-271-085	215-0-283-045	215-0-284-225	215-0-286-185
215-0-271-095	215-0-283-055	215-0-284-235	215-0-286-195
215-0-271-105	215-0-283-065	215-0-284-245	215-0-286-205
215-0-281-015	215-0-283-075	215-0-285-015	215-0-286-215
215-0-281-025	215-0-283-085	215-0-285-025	215-0-286-225
215-0-281-035	215-0-283-095	215-0-285-035	215-0-286-235
215-0-281-045	215-0-283-105	215-0-285-045	215-0-286-245
215-0-281-055	215-0-283-115	215-0-285-055	215-0-286-255
215-0-281-065	215-0-283-125	215-0-285-065	215-0-286-265
215-0-281-075	215-0-283-135	215-0-285-075	215-0-286-275
215-0-281-085	215-0-283-145	215-0-285-085	215-0-286-285
215-0-281-095	215-0-283-155	215-0-285-095	

Assessor Parcel Numbers within Parcel B

185-0-180-015	185-0-180-285	185-0-180-555	185-0-222-035
185-0-180-025	185-0-180-295	185-0-180-565	185-0-222-045
185-0-180-035	185-0-180-305	185-0-190-010	185-0-222-055
185-0-180-045	185-0-180-315	185-0-190-020	185-0-222-065
185-0-180-055	185-0-180-325	185-0-190-030	185-0-222-075
185-0-180-065	185-0-180-335	185-0-190-040	185-0-222-085
185-0-180-075	185-0-180-345	185-0-190-050	185-0-222-095
185-0-180-085	185-0-180-355	185-0-190-060	185-0-222-105
185-0-180-095	185-0-180-365	185-0-221-025	185-0-222-115
185-0-180-105	185-0-180-375	185-0-221-055	185-0-222-125
185-0-180-115	185-0-180-385	185-0-221-065	185-0-222-135
185-0-180-125	185-0-180-395	185-0-221-075	185-0-222-145
185-0-180-135	185-0-180-405	185-0-221-085	185-0-222-155
185-0-180-145	185-0-180-415	185-0-221-095	185-0-222-165
185-0-180-155	185-0-180-425	185-0-221-105	185-0-222-175
185-0-180-165	185-0-180-435	185-0-221-115	185-0-222-185
185-0-180-175	185-0-180-445	185-0-221-125	185-0-222-195
185-0-180-185	185-0-180-455	185-0-221-135	185-0-222-205
185-0-180-195	185-0-180-465	185-0-221-145	185-0-223-015
185-0-180-205	185-0-180-475	185-0-221-155	185-0-223-025
185-0-180-215	185-0-180-485	185-0-221-165	185-0-223-035
185-0-180-225	185-0-180-495	185-0-221-175	185-0-223-045
185-0-180-235	185-0-180-505	185-0-221-185	185-0-223-055
185-0-180-245	185-0-180-515	185-0-221-195	185-0-223-065
185-0-180-255	185-0-180-525	185-0-221-265	185-0-223-075
185-0-180-265	185-0-180-535	185-0-222-015	
185-0-180-275	185-0-180-545	185-0-222-025	

LAFCO 14-12

**RESOLUTION OF THE VENTURA LOCAL AGENCY
FORMATION COMMISSION MAKING DETERMINATIONS
AND APPROVING THE CHANGE OF ORGANIZATION
PROPOSAL FROM OXNARD DRAINAGE DISTRICT NO. 1
DETACHMENT – DETACHMENT NO. 4 (PARCELS A AND
B)**

WHEREAS, the above-referenced proposal has been filed with the Executive Officer of the Ventura Local Agency Formation Commission (“LAFCo” or “Commission”) pursuant to the Cortese-Knox-Hertzberg Local Government Reorganization Act of 2000 (§ 56000 et seq. of the California Government Code); and

WHEREAS, at the times and in the manner required by law, the LAFCo Executive Officer gave notice of the hearing; and

WHEREAS, the proposal was duly considered on September 17, 2014, as specified in the notice of hearing; and

WHEREAS, evidence has been provided to the Commission that the affected territory contains more than 12 registered voters and is therefore inhabited as defined by Government Code § 56046; and

WHEREAS, the Commission heard, discussed and considered all oral and written testimony for and against the proposal including, but not limited to, the LAFCo Staff Report and recommendation, the environmental determination, spheres of influence, and applicable local plans and policies; and

WHEREAS, all landowners within the affected territory have not consented to the proposal; and

WHEREAS, no written opposition against the proposal has been submitted; and

WHEREAS, the Commission finds the proposal to be in the best interest of the landowners and present and future inhabitants of the affected territory, and the organization of local governmental agencies within Ventura County;

NOW, THEREFORE, BE IT RESOLVED, DETERMINED AND ORDERED by the Ventura Local Agency Formation Commission as follows:

- (1) The LAFCo Staff Report and recommendation for approval dated September 17, 2014 are adopted; and

- (2) The subject proposal is assigned the following distinctive short form designation:
**LAFCO 14-12 OXNARD DRAINAGE DISTRICT NO. 1 DETACHMENT –
DETACHMENT NO. 4 (PARCELS A AND B)**
- (3) The proposal is exempt from CEQA pursuant to § 15061(b)(3) of the CEQA Guidelines and LAFCo staff is directed to file a Notice of Exemption under § 15062 of the CEQA Guidelines; and
- (4) The Commission finds that the proposal will lead to planned, orderly, and efficient development; and
- (5) The change of organization is hereby approved, and the boundaries are established as generally set forth in the attached Exhibit A; and
- (6) The Commission waives conducting authority proceedings pursuant to Government Code § 56663; and
- (7) **The subject change of organization shall not be recorded until all LAFCo fees have been paid and until fees necessary for filing with the State Board of Equalization have been submitted to the LAFCo Executive Officer; and**
- (8) **The subject change of organization shall not be recorded until maps and legal descriptions consistent with this approval have been approved by the Ventura County Surveyor.**

This resolution was adopted on September 17, 2014.

	AYE	NO	ABSTAIN	ABSENT
Commissioner Dandy	<input checked="" type="checkbox"/>	<input type="checkbox"/>	<input type="checkbox"/>	<input type="checkbox"/>
Commissioner Ford-McCaffrey	<input checked="" type="checkbox"/>	<input type="checkbox"/>	<input type="checkbox"/>	<input type="checkbox"/>
Commissioner Morehouse	<input checked="" type="checkbox"/>	<input type="checkbox"/>	<input type="checkbox"/>	<input type="checkbox"/>
Commissioner Parks	<input checked="" type="checkbox"/>	<input type="checkbox"/>	<input type="checkbox"/>	<input type="checkbox"/>
Commissioner Parvin	<input checked="" type="checkbox"/>	<input type="checkbox"/>	<input type="checkbox"/>	<input type="checkbox"/>
Commissioner Zaragoza	<input checked="" type="checkbox"/>	<input type="checkbox"/>	<input type="checkbox"/>	<input type="checkbox"/>
Alt. Commissioner Bennett	<input type="checkbox"/>	<input type="checkbox"/>	<input type="checkbox"/>	<input checked="" type="checkbox"/>
Alt. Commissioner Cunningham	<input type="checkbox"/>	<input type="checkbox"/>	<input type="checkbox"/>	<input type="checkbox"/>
Alt. Commissioner Freeman	<input checked="" type="checkbox"/>	<input type="checkbox"/>	<input type="checkbox"/>	<input type="checkbox"/>
Alt. Commissioner Smith	<input type="checkbox"/>	<input type="checkbox"/>	<input type="checkbox"/>	<input checked="" type="checkbox"/>

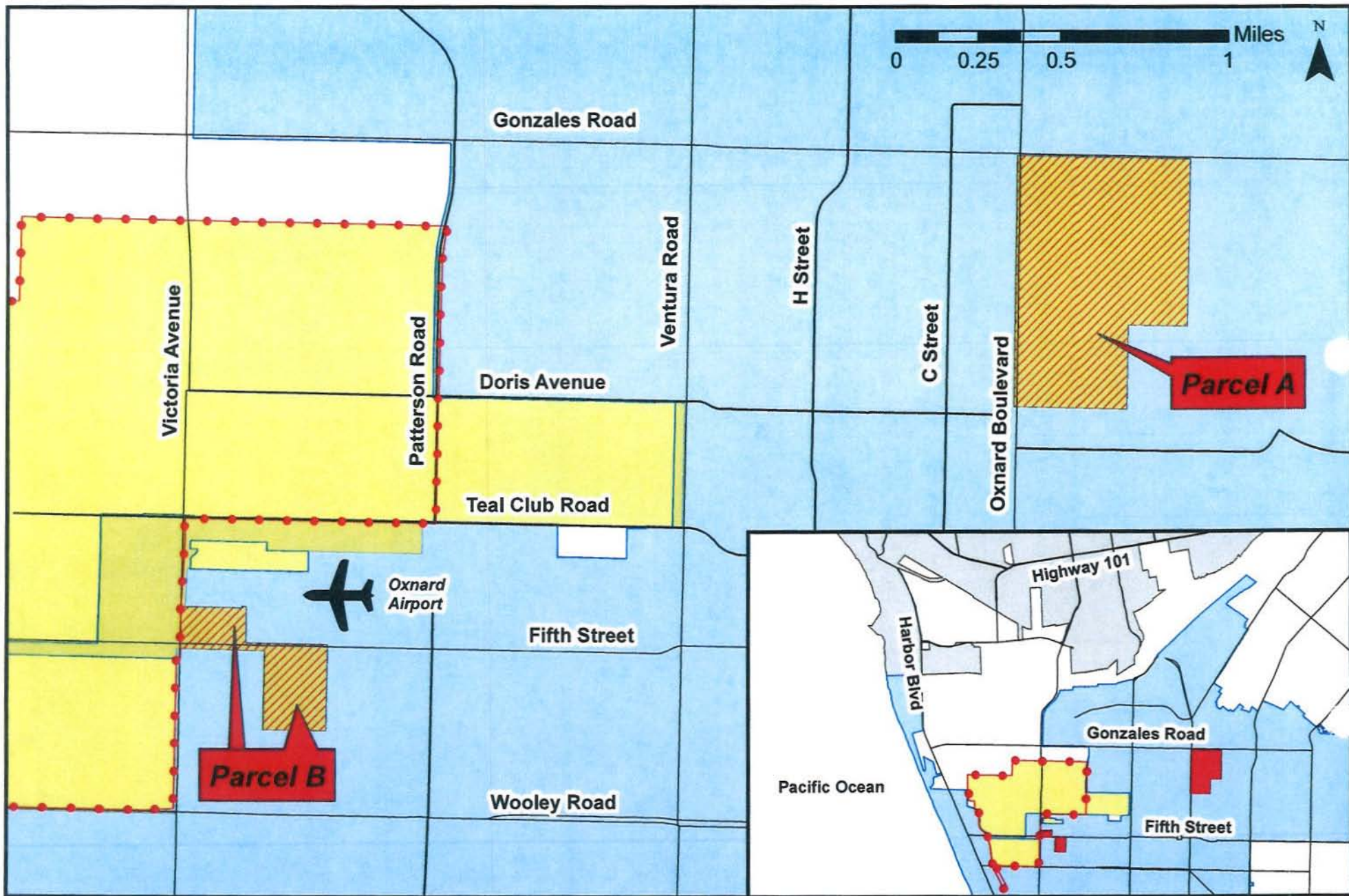
Dated: 9-17-14



Chair, Ventura Local Agency Formation Commission

Attachment: Exhibit A

- c:
- Oxnard Drainage District No. 1
 - City of Oxnard
 - Ventura County Assessor
 - Ventura County Surveyor
 - Ventura County GIS Officer
 - Ventura County Elections – Registrar of Voters
 - Ventura County Auditor-Controller
 - Ventura County Planning Division
 - Ventura County Watershed Protection District



-  Proposal Area (Parcels A and B)
-  Oxnard Drainage District No. 1 - District Boundary
-  Oxnard Drainage District No. 1 - Sphere of Influence
-  City of Oxnard

LAFCo 14-12
Oxnard Drainage District No. 1
Detachment No. 4
September 17, 2014
Exhibit A



**OXNARD DRAINAGE DISTRICT NO. 1
DETACHMENT NO. 4**

PARCEL A

A portion of the Rancho El Rio de Santa Clara o'La Colonia, in the City of Oxnard, County of Ventura, State of California, as per partition map filed in the Office of the County Clerk of said County, in the action entitled "Thomas A. Scott, et al., Plffs., vs. Rafael Gonzales, et al., Defts.", described as follows:

Beginning at the westerly terminus of the 1st course of the Certificate of Completion referred to as "Detachment No. 1 From District No. 1" as described in document number 69004, recorded October 16, 1974 in Book 4325, Page 247 of Official Records in said County; thence, along said 1st course and the existing boundary of said Oxnard Drainage District No. 1, the following 8 courses:

- 1st - East 1,753.54 feet to the southerly terminus of the 2nd course of Parcel F of "Oxnard Drainage District, Detachment No. 3" described in the Certificate of Completion recorded November 10, 1997 as document number 97-150791 of Official Records of said County; thence, along the 2nd and 3rd courses of said document number 97-150791 of Official Records, the following 2 courses:
- 2nd - North 00°00'12" East 1,304.77 feet; thence,
- 3rd - North 89°58'41" East 941.54 feet to a point in the 2nd course described in said document number 69004; thence, along said 2nd course of said document number 69004, and continuing along the 3rd and 4th courses of said document number 69004, the following 3 courses:
- 4th - North 2,599.43 feet; thence;
- 5th - West 2,695.16 feet; thence;
- 6th - South 2,846.15 feet to the northerly terminus of the 12th course of Parcel G of said Oxnard Drainage District, Detachment No. 3; thence, along said 12th course,
- 7th - South 20.00 feet to the northerly terminus of the 207th course of said document number 69004; thence, along said 207th course,
- 8th - South 1,038.41 feet to the **Point of Beginning**.


Containing 213.38 acres, more or less.

Disclaimer:

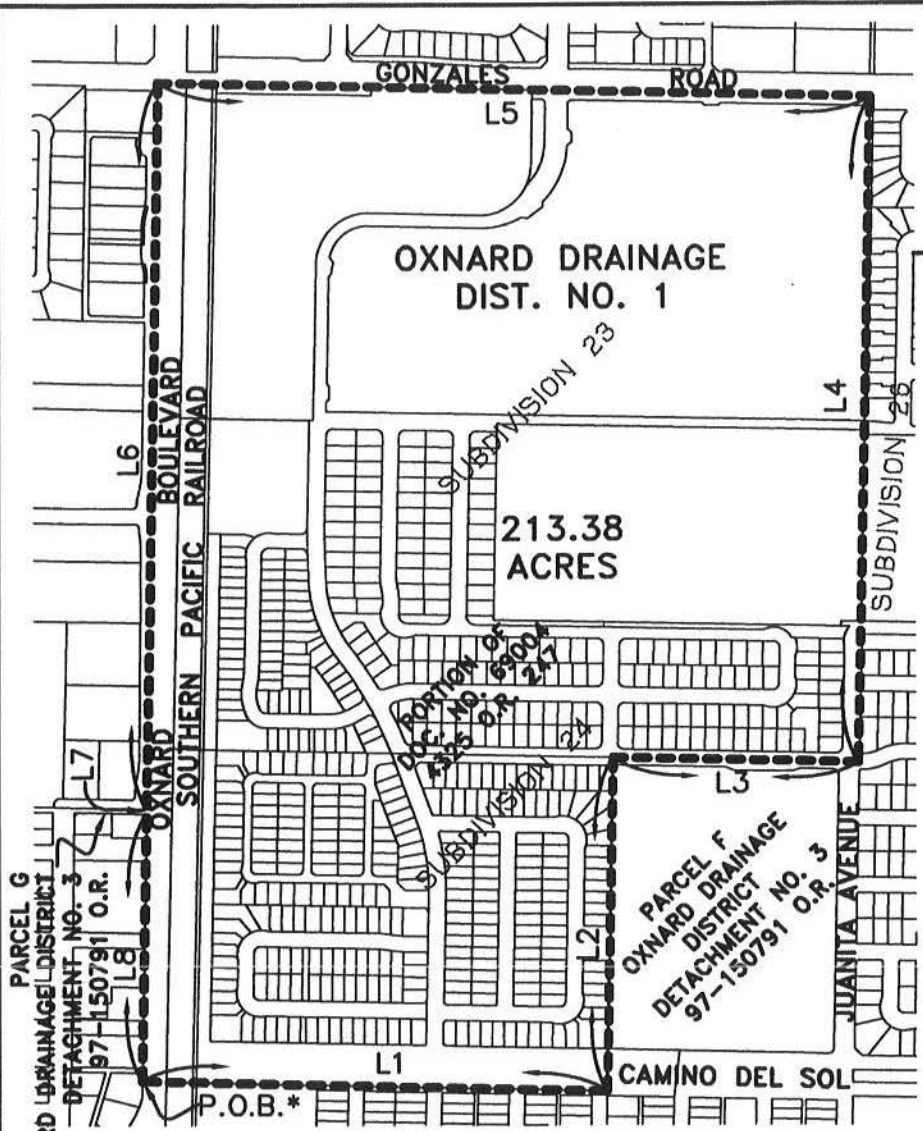
For assessment purposes only. This description of land is not a legal property description as defined in the Subdivision Map Act and may not be used as the basis for an offer for sale of the land described.



The Ventura County Surveyor's office of the Public Works Agency certifies this map and legal description to be definite and certain.

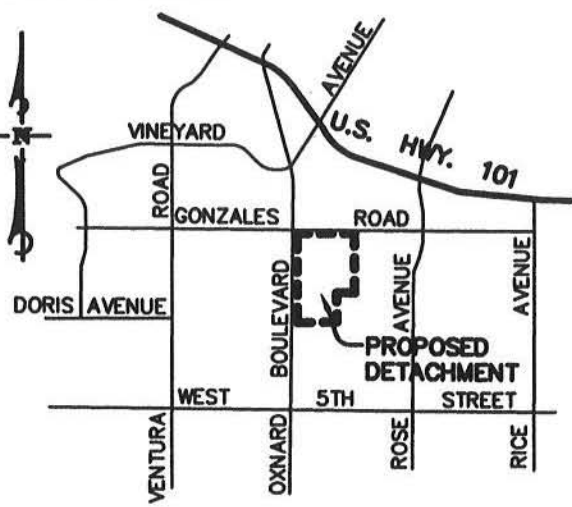
Certified by: 

Date: 6/19/2015

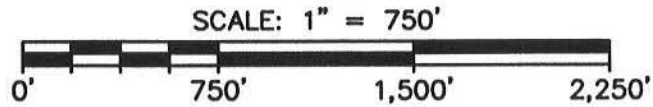


VICINITY MAP

NOT TO SCALE



LINE TABLE		
LINE	DIRECTION	LENGTH
L1	EAST	1753.54'
L2	N 00°00'12" E	1304.77'
L3	N 89°58'41" E	941.54'
L4	NORTH	2599.43'
L5	WEST	2695.16'
L6	SOUTH	2846.15'
L7	SOUTH	20.00'
L8	SOUTH	1038.41'



SURVEYOR'S STATEMENT

THIS MAP WAS PREPARED BY ME OR UNDER MY DIRECT SUPERVISION.

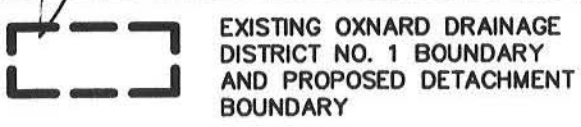
JAMES P. FALLON *[Signature]* 11/15/2015
DATE



* P.O.B.; THE WESTERLY TERMINUS OF THE 1ST COURSE OF "DETACHMENT NO. 1 FROM DISTRICT NO. 1" PER CERTIFICATE OF COMPLETION REC. 10/16/1974, 4325 O.R. 247.

Disclaimer: For assessment purposes only. This description of land is not a legal property description as defined in the Subdivision Map Act and may not be used as the basis for an offer for sale of the land described.

LEGEND



**OXNARD DRAINAGE DISTRICT NO. 1
DETACHMENT NO. 4**

PARCEL A

A PORTION OF RANCHO EL RIO DEL SANTA CLARA O'LA COLONIA, IN THE CITY OF OXNARD, COUNTY OF VENTURA, STATE OF CALIFORNIA, AS PER PARTITION MAP FILED IN THE OFFICE OF THE COUNTY CLERK OF SAID COUNTY, IN THE ACTION ENTITLED "THOMAS A. SCOTT, ET AL., PLFFS., VS. RAFAEL GONZALES, ET AL., DEFTS."



1327 Del Norte Road, Suite 200, Camarillo, CA 93010
Phone: (805) 981-0706 Fax: (805) 981-0251

The Ventura County Surveyor's office of the Public Works Agency certifies this map and legal description to be definite and certain.

Certified by: 

Date: 6/19/2015

OXNARD DRAINAGE DISTRICT NO. 1 DETACHMENT NO. 4

PARCEL B

A portion of Lots 100, 101, 110, 111, Victoria Avenue (West Road) and Fifth Street of the Patterson Ranch Subdivision in Rancho El Rio de Santa Clara o'La Colonia, in the City of Oxnard, County of Ventura, State of California, as shown on the map recorded in the office of the Ventura County Recorder in Book 8, Page 1 of Miscellaneous Records (Maps), more particularly described as follows:

Beginning at the southerly terminus of the 3rd course of the "Fifth & Patterson" Detachment from Oxnard Drainage District No. 1 as described in the Certificate of Completion recorded February 12, 2004 as document no. 20040212-0033687 of Official Records of said County; thence, along said 3rd course and the existing Oxnard Drainage District No. 1 boundary the following 5 courses:

- 1st - North 01°12'01" East 1,350.38 feet to a point on the 4th course of Parcel D of "Detachment No. 2 from Oxnard Drainage District No. 1" as described in the Certification of Completion recorded December 27, 1983 as document number 83-146108 of Official Records of said County; thence, along said 4th course,
- 2nd - West 990.00 feet to the easterly terminus of the 181st course of the Certificate of Completion referred to as "Detachment No. 1 From District No. 1" as described in document number 69004, recorded in Book 4325, Page 247 of Official Records in said County; thence, along said 181st course,
- 3rd - West 300.00 feet to the southerly terminus of the 182nd course of said document number 69004; thence along said 182nd course,
- 4th - North 572.25 feet to the easterly terminus of the 183rd course of said document number 69004; thence, along said 183rd course and it's westerly prolongation,
- 5th - West 1,040.00 feet to the centerline of Victoria Avenue as shown on Parcel Map No. 97-5-55, recorded in Book 58, Pages 46-48, inclusive, of Parcel Maps of said County; thence, along said centerline of Victoria Avenue,
- 6th - South 00°00'10" West 678.07 feet to a point in the 3rd course of Parcel C of the "Oxnard Drainage District, Detachment No. 3" as described in the Certificate of Completion recorded November 10, 1997 as document number 97-150791 of Official Records of said County; thence, along said 3rd course of said Parcel C,
- 7th - East 207.43 feet to the westerly terminus of the 5th course of the Rancho Victoria Reorganization, Detachment from Oxnard Drainage District No. 1 as described in the Certificate of Completion recorded November 16, 1992 as document number 92-208032 of Official Records of said County; thence along said 5th course,
- 8th - East 1,115.55 feet to the Northerly terminus of the 6th course of said document number 92-208032 of Official Records; thence, along said 6th course,

- 9th - South 00°00'41" East 704.38 feet to the northerly terminus of the 10th course of Parcel B of the Raznick Reorganization, Detachment from Oxnard Drainage District No. 1 as described in the Certification of Completion recorded May 21, 1990 as document number 90-076128 of Official Records of said County; thence, along said 10th course,
- 10th - South 01°12'23" West 540.00 to a point in the 106th course of Parcel E as described in said document number 83-146108 of Official Records; thence, along said 106th course,
- 11th - East 990.00 feet to the **Point of Beginning**.

Containing 47.72 acres, more or less.



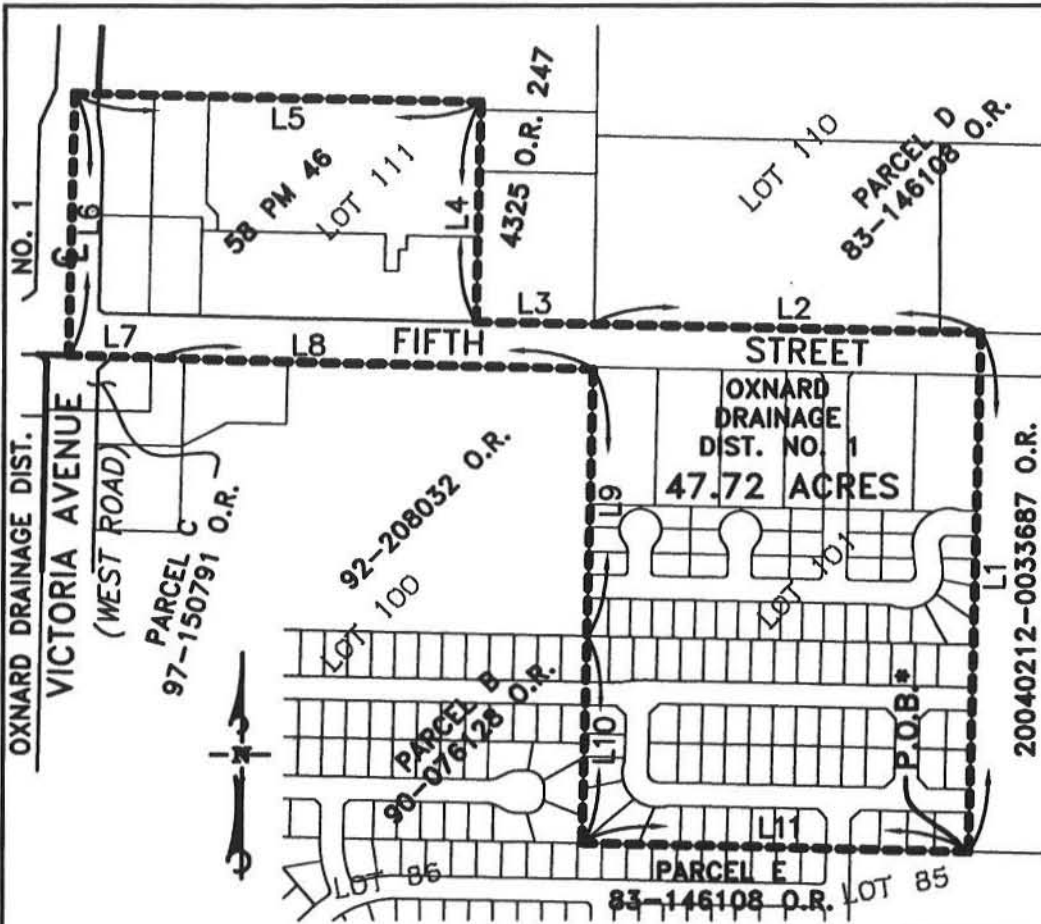
Disclaimer:

For assessment purposes only. This description of land is not a legal property description as defined in the Subdivision Map Act and may not be used as the basis for an offer for sale of the land described.

The Ventura County Surveyor's office of the Public Works Agency certifies this map and legal description to be definite and certain.

Certified by:

Date: 6/19/2015



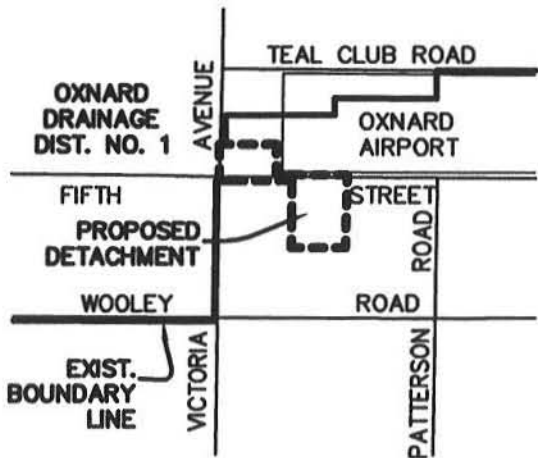
LINE TABLE		
LINE	DIRECTION	LENGTH
L1	N 01°12'01" E	1,350.38'
L2	WEST	990.00'
L3	WEST	300.00'
L4	NORTH	572.25'
L5	WEST	1,040.00'
L6	S 00°00'10" W	678.07'
L7	EAST	207.43'
L8	EAST	1,115.55'
L9	S 00°00'41" E	704.38'
L10	S 01°12'23" W	540.00'
L11	EAST	990.00'

* P.O.B.; THE SOUTHERLY TERMINUS OF THE 3RD COURSE OF OF THE "FIFTH & PATTERSON" DETACHMENT FROM OXNARD DRAINAGE DISTRICT NO. 1 AS DESCRIBED IN THE CERTIFICATE OF COMPLETION REC. 2/12/2004 PER DOCUMENT NO. 20040212-0033687 OF OFFICIAL RECORDS.

Disclaimer: For assessment purposes only. This description of land is not a legal property description as defined in the Subdivision Map Act and may not be used as the basis for an offer for sale of the land described.

VICINITY MAP

NOT TO SCALE



SURVEYOR'S STATEMENT

THIS MAP WAS PREPARED BY ME OR UNDER MY DIRECT SUPERVISION.

JAMES P. FALLON

DATE

6/15/2015



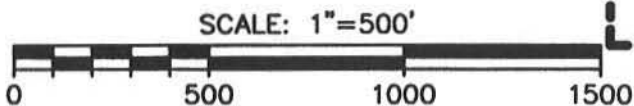
LEGEND



EXISTING OXNARD DRAINAGE DISTRICT NO. 1 BOUNDARY



PROPOSED DETACHMENT BOUNDARY



**OXNARD DRAINAGE DISTRICT NO. 1
DETACHMENT NO. 4**

PARCEL B

A PORTION OF LOTS 100, 101, 110, 111, VICTORIA AVENUE (WEST ROAD) AND FIFTH STREET OF THE PATTERSON RANCH SUBDIVISION IN RANCHO EL RIO DE SANTA CLARA O'LA COLONIA, IN THE CITY OF OXNARD, COUNTY OF VENTURA, STATE OF CALIFORNIA, AS SHOWN ON THE MAP FILED IN BOOK 8, PAGE 1 OF MISCELLANEOUS RECORDS (MAPS).


SHEET 1 OF 1

PLOT DATE: 6/15/2015



1327 Del Norte Road, Suite 200, Camarillo, CA 93010
Phone: (805) 981-0706 Fax: (805) 981-0251

The Ventura County Surveyor's office of the Public Works Agency certifies this map and legal description to be definite and certain.

Certified by: 

Date: 6/19/2015

Ventura County Assessor's Office
800 South Victoria Avenue
Ventura, CA 93009-1270

(805) 654-2181
FAX (805) 645-1305
<http://assessor.countyofventura.org>



Frank Newell
Deputy Assessor – Valuation
Kenneth Kaiser, Ph.D., ASA
Deputy Assessor – Administration

DAN GOODWIN, MAI
ASSESSOR OF VENTURA COUNTY

TO: Local Agency Formation Commission
Attn.: Andrea Ozdy

FROM: Assessor's Office - Mapping & Property Transfer Section
Eva Palazuelos

SUBJECT: **L.A.F.CO. Item 14-12 Oxnard Drainage District No.1 - Detachment No.4 (Par. A & B)**

1. The subject proposal does not conflict with lines of assessment.
2. The subject proposal takes in tax rate areas 03002, 03013, 03035, 03041, 03081, 03122, 03139, 03145, 03240, 03249, 03250, 03292, 03293, 03295, 03299 and 03304.
3. Upon completion of this filing, the parcels encompassed by this detachment will go into the following existing tax rate areas:

Current TRAs	Proposed Existing TRA
03002, 03013, 03035, 03081, 03122, 03145, 03240, 03249, 03250, 03292, 03293,	03001
03041, 03295, 03299, 03304	03294
03139	03139*

*No change to TRA necessary; this portion of Gonzales Road does not include Oxnard Drainage District No.1 (County Fund 7735 / BOE Code 0060).

4. The subject proposal is contiguous with the **Oxnard Drainage District No.1.**
5. The subject proposal takes in the following Assessor's parcel number(s), assessee(s) and total assessed value(s) per the **2014-15** roll year:

Assessor's Parcel Number	Assessee	Total Assessed Value
SEE ATTACHED	"ASSESSOR REPORT"	DATED 7/18/2014

6. The subject's proposed map and legal description are acceptable.